

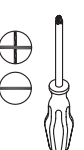
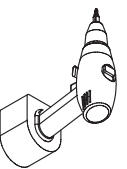
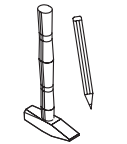
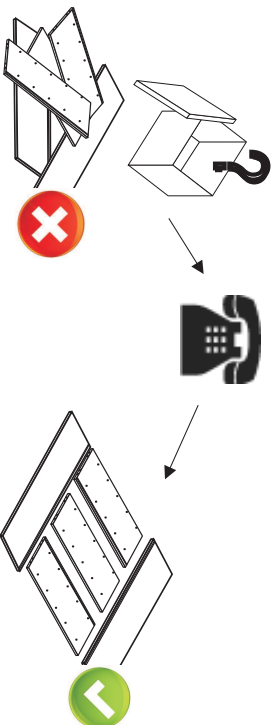
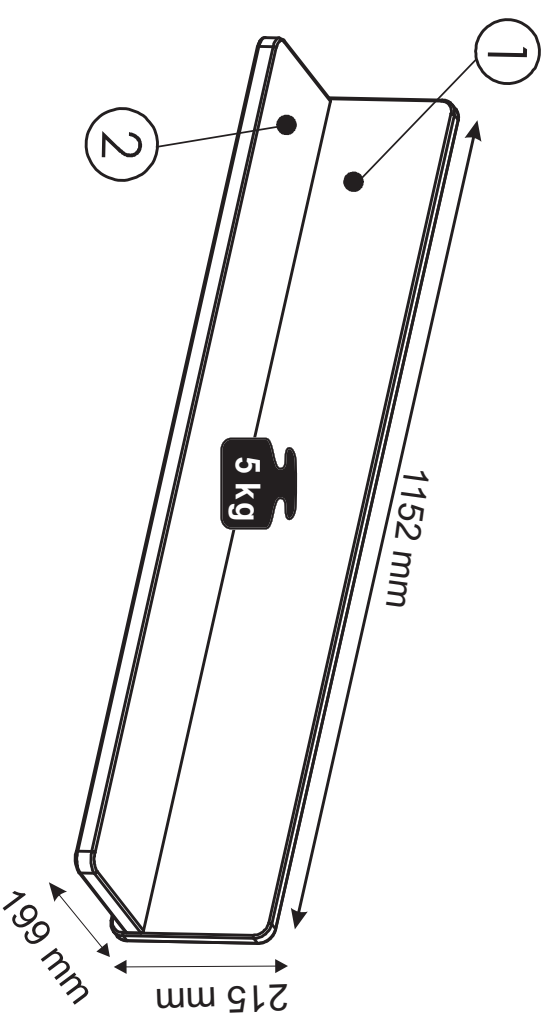
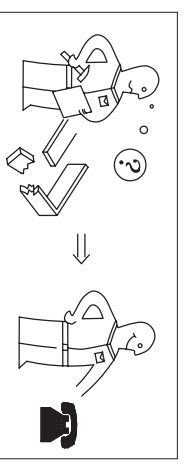
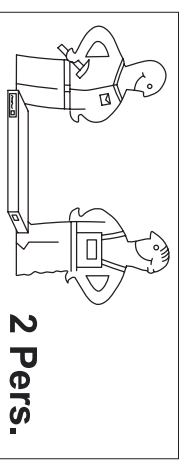
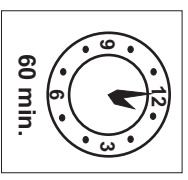
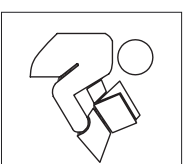
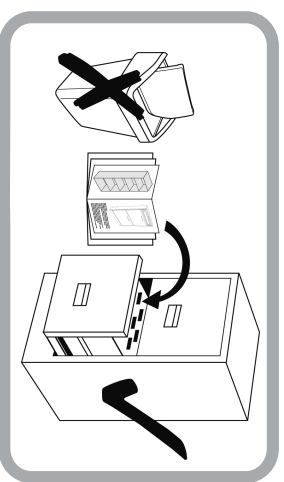
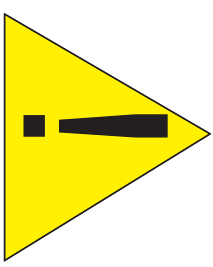
02.01.2018

Modelname / Model name / Nom du modèle / Modelname / Nome modello / Názov modelu / Modelnaam /  
Ime modela / Número Modelo / Model neve / Название модели / Názov modelu / Ime modela /  
Denimlje model / Наименование на моделa / Nazwa modelu

# -ATLANTA-

Type / Tipo / Tipus / Typ / Тип / Tip

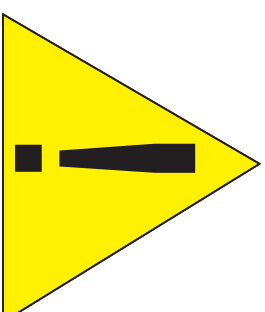
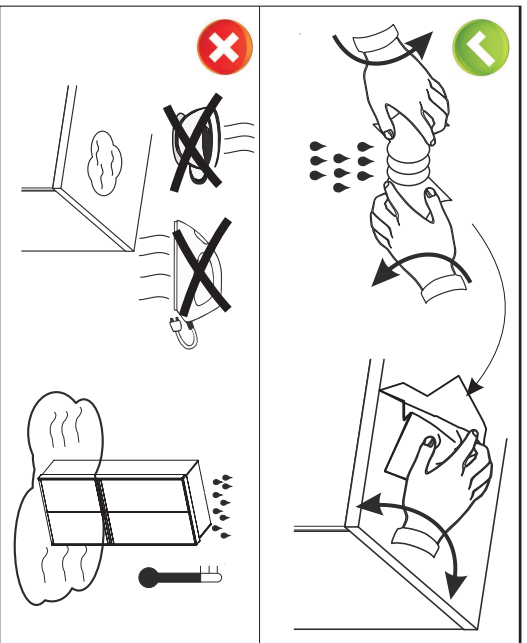
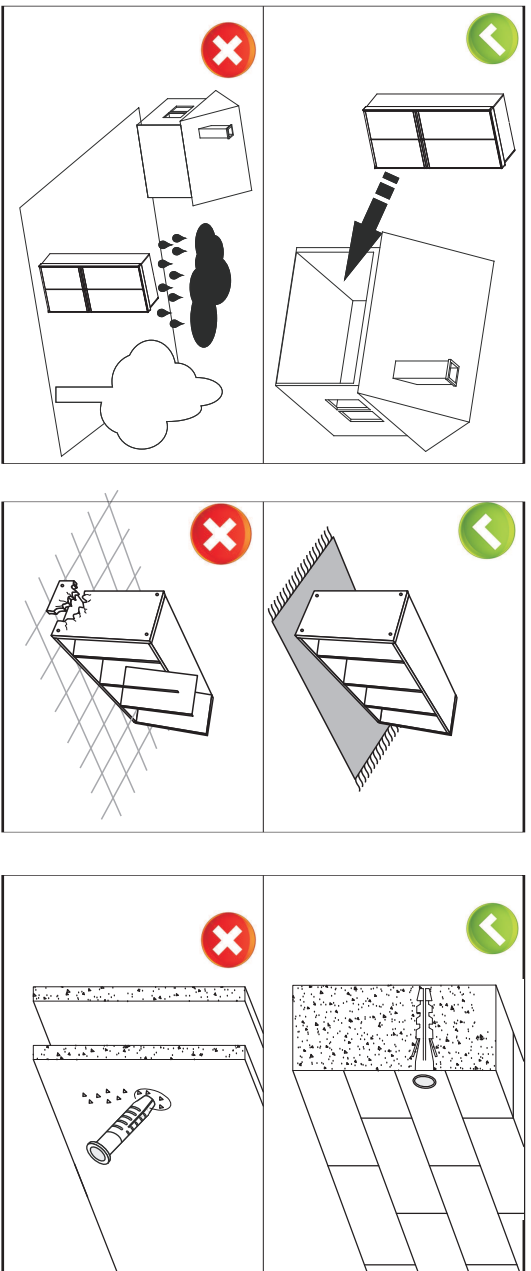
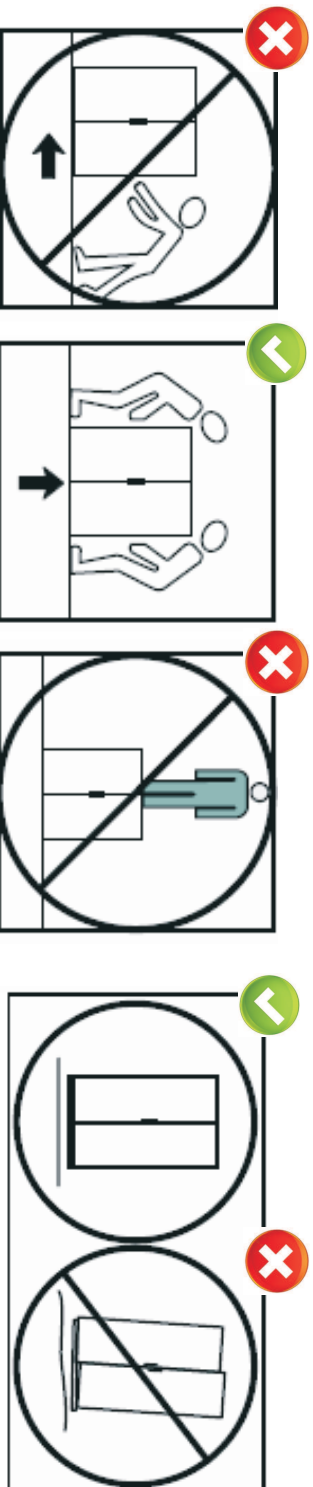
# 31


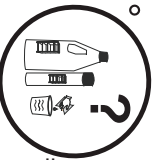



Modelname / Model name / Nom du modèle / Modelname / Nome modello / Názov modelu / Modelnaam /  
Ime modela / Número Modelo / Model neve / Название модели / Názov modelu / Ime modela /  
Denpříjme model / Наименование на модела / Nazwa modelu

# -ATLANTA-

# 31



  
  
  
Tel: +48 601 247 625  
Tel: +48 601 677 210  
sprzedaz@dekortmeble.pl  
www.dekortmeble.pl

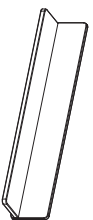
02.01.2018

Modelname / Model name / Nom du modèle / Modelnamn / Nome modello / Názov modelu / Modelnaam /  
Ime modela / Número Modelo / Model neve / Название модели / Nazov modelu / Ime modela /  
Depljite model / Наименование на модела / Nazwa modelu

Type / Tipo / Tipus / Typ / Тип / Tip

31

-ATLANTA-



001212



X...

000408



6,3x9,5

X...

B1

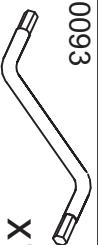


000008

7x50

X5

000093



X1

001655 8x40



X2

000181



X2

**D** Sehr geehrter Kunde. Wir gratulieren Ihnen zum Erwerb Ihres neuen Möbelstücks.  
Da wir auf die Zufriedenheit unserer Kunden viel Wert legen, bitten wir Sie, bevor Sie mit  
der Montage beginnen, den Beschlagbeutel sorgfältig zu überprüfen. Sollte ein Teil  
fehlen oder beschädigt sein, kreuzen Sie dieses deutlich auf der Montageanleitung an  
und schicken uns diese zu

**GBD**Dear Customer: We would like to congratulate you buying a new furniture.  
Because we emphasize our customer satisfaction, please check very carefully  
the bag with fittings before you start assembling. If some parts are missing  
or are broken please mark it with „X“ sign on assembly instruction and send it to us.

**PL** Szanowny Kliencie. Gratulujemy zakupu nowego mebla. Ponieważ  
kładziemy duży nacisk na zadowolenie naszego Klienta, prosimy  
dokładnie sprawdzić torbę z okuciami zanim zaczniecie montować.  
Gdyby brakowało jakiejś części lub byłaby uszkodzona proszę to oznaczyć  
krzyżykiem na instrukcji montażowej i przesać instrukcję.

